

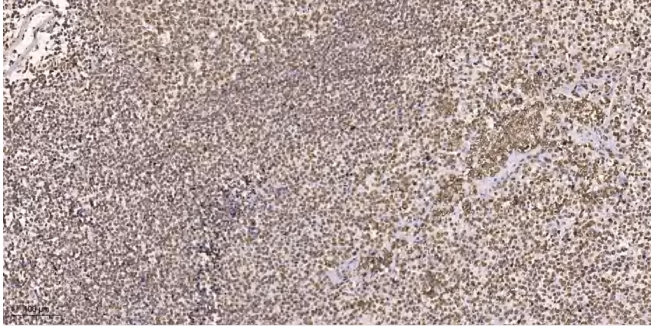


Maf1 Polyclonal Antibody

Catalog No	YP-Ab-01855
Isotype	IgG
Reactivity	Human;Mouse;Rat
Applications	IHC;IF;ELISA
Gene Name	MAF1
Protein Name	Repressor of RNA polymerase III transcription MAF1 homolog
Immunogen	Synthesized peptide derived from Maf1 . at AA range: 110-190
Specificity	Maf1 Polyclonal Antibody detects endogenous levels of Maf1 protein.
Formulation	Liquid in PBS containing 50% glycerol, 0.5% BSA and 0.02% sodium azide.
Source	Polyclonal, Rabbit,IgG
Purification	The antibody was affinity-purified from rabbit antiserum by affinity-chromatography using epitope-specific immunogen.
Dilution	IHC: 1/100 - 1/300. ELISA: 1/20000.. IF 1:50-200
Concentration	1 mg/ml
Purity	≥90%
Storage Stability	-20°C/1 year
Synonyms	MAF1; Repressor of RNA polymerase III transcription MAF1 homolog
Observed Band	
Cell Pathway	Nucleus . Cytoplasm .
Tissue Specificity	Brain,Epithelium,Lung,Uterus,
Function	function:Mediator of diverse signals that repress RNA polymerase III transcription. Inhibits the de novo assembly of TFIIIB onto DNA.,similarity:Belongs to the MAF1 family.,subunit:Interacts with BRF2.,
Background	This gene encodes a protein that is similar to Maf1, a <i>Saccharomyces cerevisiae</i> protein highly conserved in eukaryotic cells. Yeast Maf1 is a negative effector of RNA polymerase III (Pol III). It responds to changes in the cellular environment and represses pol III transcription. Biochemical studies identified the initiation factor TFIIIB as a target for Maf1-dependent repression. [provided by RefSeq, Jul 2008],
matters needing attention	Avoid repeated freezing and thawing!
Usage suggestions	This product can be used in immunological reaction related experiments. For more information, please consult technical personnel.



Products Images



Immunohistochemical analysis of paraffin-embedded human tonsil. 1, Tris-EDTA,pH9.0 was used for antigen retrieval. 2 Antibody was diluted at 1:200(4° overnight.3,Secondary antibody was diluted at 1:200(room temperature, 45min).